



Date:12/11/2019

Ref: TB-C-0049

Pegasus Grande CPL Extra Fixing Process Sheet

Date: 12/11/2019

Document SOP: Pegasus CPL Extra Fixing Process Sheet

Standard Operating Time Allowance: 15 minutes

To maintain the integrity of CPLs within early production models from the Pegasus Grande caravan range we have a Pegasus CPL Extra Fixing Process Sheet to resolve any reported concerns.

We would like to take this opportunity to thank you for your continued support and assistance.

Retailer Services
Bailey of Bristol



Pegasus Grande CPL Extra Fixing Process Sheet

Part numbers amended

Date: 08/11/2019

SOP No: Z-SOP-RPC-P-SP-007

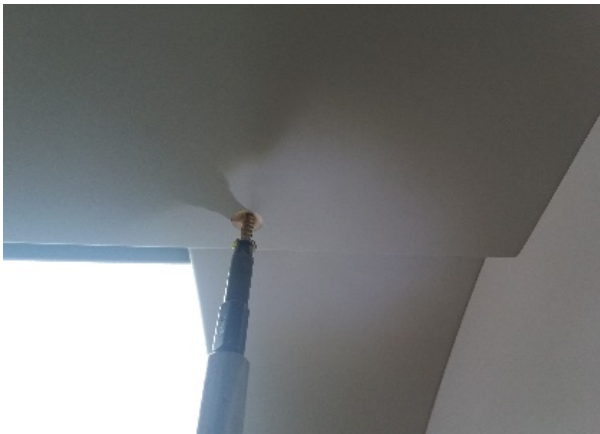
Area controlled by Dave Evans



STEP 1) Start by pre-drilling holes through the CPL on both sides at 85mm from the side edge and 15mm up from the bottom edge.



STEP 2) Now countersink these two holes



STEP 3) Using 2 x screws 3.5x25 (Part No: **1430058**) fix the CPL to the blind cap.



STEP 4) Ensure each of the screw heads are flush to the CPL.



STEP 5) Cover each of the exposed screw heads with adhesive caps (Part No: **6053094**).